



Schindler 5400 AP

Machine-Room-Less Configuration Planning Data



Schindler 5400 AP MRL Planning Data

| Load | | Speed | Car (mm) | Door (mm) | Shaft (mm) | Overtravel (mm) | | | | Pit Depth (mm) | | | | | |
|-------------|-------------|-------------|-------------|-------------|-------------|-----------------|--------------|------|----------|----------------|--------------|------|----------|------|------|
| (kg) | Pers | (m/s) | (W x D) | (W x D) | (W x D) | EN81 | CP2: 2000 | CNS | Malaysia | EN81 | CP2: 2000 | CNS | Malaysia | | |
| 450 | 6 | 1.0 | 1000 x 1250 | 800 x 2100 | 1800 x 1700 | 4050 | N/A | 4250 | N/A | 1400 | N/A | 1500 | N/A | | |
| | | 4150 | | | | 4650 | | 1450 | | 2100 | | | | | |
| | | 4250 | | | | 4650 | | 1550 | | 2100 | | | | | |
| 550 | 7/8 | 1.0 | 1400 x 1030 | 800 x 2100 | 2000 x 1550 | 4050 | 4500 | 4250 | 4450 | 1400 | 1500 | 1500 | 1550 | | |
| | | 4150 | | | | 4600 | 4650 | 4400 | 1450 | 1600 | 2100 | 1600 | | | |
| | | 4250 | | | | 4700 | 4650 | 4500 | 1550 | 1700 | 2100 | 1700 | | | |
| 630 | 8/9 | 1.0 | 1400 x 1100 | 800 x 2100 | 2000 x 1600 | 4050 | N/A | 4250 | N/A | 1400 | N/A | 1500 | N/A | | |
| | | | | 900 x 2100 | 2050 x 1600 | | | | | | | | | | |
| | | | 1100 x 1400 | 800 x 2100 | 1800 x 1850 | 4150 | N/A | 4650 | N/A | 1450 | N/A | 2100 | N/A | | |
| | | 1400 x 1100 | 800 x 2100 | 2000 x 1600 | | | | | | | | | | | |
| | | 900 x 2100 | 2050 x 1600 | | | | | | | | | | | | |
| | | 1.6 | 1400 x 1100 | 800 x 2100 | 2000 x 1600 | 4250 | N/A | 4650 | N/A | 1550 | N/A | 2100 | N/A | | |
| | | | | 900 x 2100 | 2050 x 1600 | | | | | | | | | | |
| | | | 1100 x 1400 | 800 x 2100 | 1800 x 1850 | 4150 | N/A | 4650 | N/A | 1450 | N/A | 2100 | N/A | | |
| | | 1400 x 1100 | 800 x 2100 | 2000 x 1600 | | | | | | | | | | | |
| 900 x 2100 | 2050 x 1600 | | | | | | | | | | | | | | |
| 750 | 10/11 | 1.0 | 1400 x 1250 | 800 x 2100 | 2000 x 1750 | 4100 | 4500 | 4250 | 4500 | 1450 | 1600 | 1500 | 1550 | | |
| | | | | 900 x 2100 | 2050 x 1750 | | | | | | | | | | |
| | | | 1400 x 1350 | 800 x 2100 | 2000 x 1800 | 4150 | 4600 | 4650 | 4400 | 1500 | 1650 | 2100 | 1600 | | |
| | | 900 x 2100 | 2050 x 1800 | | | | | | | | | | | | |
| | | 1400 x 1250 | 800 x 2100 | 2000 x 1750 | 4300 | | | | | | | | | 4700 | 4650 |
| | | 900 x 2100 | 2050 x 1750 | | | | | | | | | | | | |
| | | 1400 x 1350 | 800 x 2100 | 2000 x 1800 | | | | | | | | | | | |
| | | 900 | 12/13 | 1.0 | 1600 x 1300 | 900 x 2100 | 2200 x 1800 | 4100 | 4500 | 4250 | 4500 | 1450 | 1600 | 1500 | 1550 |
| | | | | | | 1000 x 2100 | 2250 x 1800 | | | | | | | | |
| 1600 x 1400 | 900 x 2100 | | | | 2200 x 1850 | 4150 | 4600 | 4650 | 4400 | 1500 | 1650 | 2100 | 1600 | | |
| 1000 x 2100 | 2250 x 1850 | | | | | | | | | | | | | | |
| 1400 x 1600 | 900 x 2100 | | | 2050 x 2050 | 4300 | | | | | | | | | 4700 | 4650 |
| 1600 x 1300 | 900 x 2100 | | | 2200 x 1800 | | | | | | | | | | | |
| 1000 x 2100 | 2250 x 1800 | | | | | | | | | | | | | | |
| 1.6 | 1600 x 1400 | | | 900 x 2100 | 2200 x 1850 | 4150 | 4600 | 4650 | 4400 | 1500 | 1650 | 2100 | 1600 | | |
| | | | | 1000 x 2100 | 2250 x 1850 | | | | | | | | | | |
| | 1400 x 1600 | 900 x 2100 | 2050 x 2050 | 4300 | 4700 | 4650 | 4550 | 1600 | 1750 | 2100 | 1700 | | | | |
| 1600 x 1300 | 900 x 2100 | 2200 x 1800 | | | | | | | | | | | | | |
| 1000 x 2100 | 2250 x 1800 | | | | | | | | | | | | | | |
| 1.75 | 1600 x 1400 | 900 x 2100 | 2200 x 1850 | 4300 | 4700 | 4650 | 4550 | 1600 | 1750 | 2100 | 1700 | | | | |
| | | 1000 x 2100 | 2250 x 1850 | | | | | | | | | | | | |
| | 1400 x 1600 | 900 x 2100 | 2050 x 2050 | 4300 | 4700 | 4650 | 4550 | 1600 | 1750 | 2100 | 1700 | | | | |
| 1600 x 1300 | 900 x 2100 | 2200 x 1800 | | | | | | | | | | | | | |
| 1000 x 2100 | 2250 x 1800 | | | | | | | | | | | | | | |

| Reaction Load (kN) | | | | | | | | Motor | Voltage | Circuit Breaker per elevator | Power Supply Capacity (kVA) | | | | Starting power per elevator | Heat Dissipation per elevator | | |
|--------------------|-----|----|-----|-----|-----|--------|-----|-------|---------|------------------------------|-----------------------------|---------|---------|---------|-----------------------------|-------------------------------|----------|-----|
| F6 | F8 | F9 | F10 | F14 | F15 | F16+17 | F18 | (kW) | (V) | (A) | 1 unit | 2 units | 3 units | 4 units | (kVA) | (kW) | (kcal/h) | |
| 21 | 54 | 57 | 48 | 14 | 8 | 108 | 50 | 3 | 220-230 | 40 | 9 | 16 | 24 | 32 | 13 | 0.40 | 340 | |
| 33 | 93 | 57 | 49 | 21 | 12 | 179 | 94 | 4.8 | 380-415 | 25 | 11 | 20 | 30 | 39 | 18 | 0.63 | 543 | |
| 36 | 93 | 57 | 49 | 23 | 13 | 179 | 96 | 5.3 | 460 | 20 | 11 | 20 | 30 | 39 | 19 | 0.70 | 600 | |
| 24 | 56 | 65 | 54 | 17 | 8 | 113 | 52 | 4.7 | 220-230 | 40 | 11 | 20 | 30 | 39 | 15 | 0.57 | 487 | |
| | | | | | | | | | 380-415 | 25 | | | | | | | | |
| | | | | | | | | | 460 | 20 | | | | | | | | |
| 37 | 95 | 65 | 55 | 25 | 12 | 184 | 97 | 5.9 | 220-230 | 63 | 12 | 22 | 32 | 42 | 19 | 0.78 | 668 | |
| | | | | | | | | | 380-415 | 25 | | | | | | | | |
| 41 | 95 | 65 | 55 | 28 | 14 | 184 | 97 | 6.4 | 460 | 25 | | | | | | | | |
| 26 | 57 | 68 | 56 | 16 | 10 | 115 | 52 | 4.2 | 220-230 | 40 | 11 | 20 | 30 | 39 | 15 | 0.55 | 475 | |
| | | | | | | | | | 380-415 | 25 | | | | | | | | |
| | | | | | | | | | 460 | 20 | | | | | | | | |
| 40 | 96 | 68 | 56 | 25 | 15 | 187 | 98 | 6.7 | 220-230 | 63 | 13 | 24 | 35 | 46 | 22 | 0.88 | 758 | |
| | | | | | | | | | 380-415 | 25 | | | | | | | | |
| | | | | | | | | | 460 | 25 | | | | | | | | |
| 44 | 96 | 68 | 56 | 28 | 16 | 187 | 100 | 7.4 | | | 14 | 25 | 38 | 50 | 23 | 0.98 | 838 | |
| 31 | 62 | 82 | 67 | 20 | 11 | 123 | 55 | 5.8 | 220-230 | 63 | 13 | 24 | 35 | 46 | 17 | 0.77 | 657 | |
| | | | | | | | | | 380-415 | 40 | | | | | | | | |
| | | | | | | | | | 460 | 25 | | | | | | | | |
| 46 | 103 | 82 | 68 | 30 | 17 | 195 | 102 | 10.8 | 220-230 | 63 | 14 | 25 | 38 | 50 | 23 | 1.06 | 906 | |
| | | | | | | | | | 380-415 | 40 | | | | | | | | |
| | | | | | | | | | 460 | 25 | | | | | | | | |
| 51 | 103 | 82 | 68 | 33 | 19 | 195 | 105 | 11.8 | | | 63 | 15 | 27 | 41 | 54 | 24 | 1.16 | 996 |
| | | | | | | | | | | | 40 | | | | | | | |
| | | | | | | | | | | | 25 | | | | | | | |
| 35 | 65 | 94 | 77 | 23 | 13 | 130 | 59 | 6.7 | 220-230 | 63 | 14 | 25 | 38 | 50 | 19 | 0.88 | 758 | |
| | | | | | | | | | 380-415 | 40 | | | | | | | | |
| | | | | | | | | | 460 | 25 | | | | | | | | |
| 53 | 106 | 94 | 77 | 34 | 19 | 202 | 109 | 9.6 | | | 17 | 31 | 46 | 60 | 27 | 1.27 | 1087 | |
| 58 | 106 | 94 | 77 | 38 | 21 | 202 | 112 | 10.5 | 220-230 | 63 | 18 | 33 | 49 | 64 | 28 | 1.39 | 1189 | |
| | | | | | | | | | 380-415 | 40 | | | | | | | | |
| | | | | | | | | | 460 | 40 | | | | | | | | |

Schindler 5400 AP MRL Planning Data

| Load | | Speed | Car (mm) | Door (mm) | Shaft (mm) | Overtravel (mm) | | | | Pit Depth (mm) | | | | | | | | | | | | |
|-------------|-------------|-------------|-------------|-------------|-------------|-----------------|--------------|------|----------|----------------|--------------|------|----------|-------------|------|------|------|------|------|------|------|------|
| (kg) | Pers | (m/s) | (W x D) | (W x D) | (W x D) | EN81 | CP2: 2000 | CNS | Malaysia | EN81 | CP2: 2000 | CNS | Malaysia | | | | | | | | | |
| 1000 | 13/15 | 1.0 | 1600 x 1400 | 900 x 2100 | 2200 x 1900 | 4100 | 4500 | 4250 | 4500 | 1450 | 1600 | 1500 | 1550 | | | | | | | | | |
| | | | | 1000 x 2100 | 2250 x 1900 | | | | | | | | | | | | | | | | | |
| | | | | 1100 x 2100 | 2400 x 1900 | | | | | | | | | | | | | | | | | |
| | | | 1600 x 1550 | 900 x 2100 | 2200 x 2000 | | | | | | | | | | | | | | | | | |
| | | | | 1000 x 2100 | 2250 x 2000 | | | | | | | | | | | | | | | | | |
| | | | | 1100 x 2100 | 2400 x 2000 | | | | | | | | | | | | | | | | | |
| | | | 1100 x 2100 | 900 x 2100 | 2000 x 2550 | | | | | | | | | | | | | | | | | |
| | | | 1.6 | 1600 x 1400 | 900 x 2100 | | | | | | | | | 2200 x 1900 | 4150 | 4600 | 4650 | 4400 | 1500 | 1650 | 2100 | 1600 |
| | | | | | 1000 x 2100 | | | | | | | | | 2250 x 1900 | | | | | | | | |
| | | 1100 x 2100 | | | 2400 x 1900 | | | | | | | | | | | | | | | | | |
| | | 1600 x 1550 | | 900 x 2100 | 2200 x 2000 | | | | | | | | | | | | | | | | | |
| | | | | 1000 x 2100 | 2250 x 2000 | | | | | | | | | | | | | | | | | |
| | | | | 1100 x 2100 | 2400 x 2000 | | | | | | | | | | | | | | | | | |
| | | 1100 x 2100 | | 900 x 2100 | 2000 x 2550 | | | | | | | | | | | | | | | | | |
| | | 1.75 | | 1600 x 1400 | 900 x 2100 | 2200 x 1900 | 4300 | 4700 | 4650 | 4550 | 1600 | 1750 | 2100 | 1700 | | | | | | | | |
| | | | | | 1000 x 2100 | 2250 x 1900 | | | | | | | | | | | | | | | | |
| | | | 1100 x 2100 | | 2400 x 1900 | | | | | | | | | | | | | | | | | |
| | | | 1600 x 1550 | 900 x 2100 | 2200 x 2000 | | | | | | | | | | | | | | | | | |
| 1000 x 2100 | 2250 x 2000 | | | | | | | | | | | | | | | | | | | | | |
| 1100 x 2100 | 2400 x 2000 | | | | | | | | | | | | | | | | | | | | | |
| 1100 x 2100 | 900 x 2100 | | 2000 x 2550 | | | | | | | | | | | | | | | | | | | |
| 1150 | 15/17 | | 1.0 | 1800 x 1400 | 1100 x 2100 | 2650 x 1950 | | | | | | | | | 4250 | 4300 | 4300 | 4600 | 1450 | 1450 | 1500 | 1600 |
| | | | | | 1000 x 2100 | 2750 x 1950 | | | | | | | | | | | | | | | | |
| | | 1100 x 2100 | | | | | | | | | | | | | | | | | | | | |
| | | 1950 x 1400 | | 1100 x 2100 | | | | | | | | | | | | | | | | | | |
| | | | | 1000 x 2100 | 2750 x 1950 | | | | | | | | | | | | | | | | | |
| | | | | 1100 x 2100 | | | | | | | | | | | | | | | | | | |
| | | 1.6 | 1800 x 1400 | 1100 x 2100 | 2650 x 1950 | 4300 | 4450 | 4700 | 4600 | 1500 | 1550 | 2100 | 1600 | | | | | | | | | |
| | | | | 1000 x 2100 | 2750 x 1950 | | | | | | | | | | | | | | | | | |
| | | | | 1100 x 2100 | | | | | | | | | | | | | | | | | | |
| | | | 1950 x 1400 | 1000 x 2100 | 2750 x 1950 | | | | | | | | | | | | | | | | | |
| | | | | 1100 x 2100 | | | | | | | | | | | | | | | | | | |
| | | | | 1100 x 2100 | | | | | | | | | | | | | | | | | | |
| 1.75 | 1800 x 1400 | 1100 x 2100 | 2650 x 1950 | 4400 | 4550 | 4700 | 4700 | 1600 | 1600 | 2100 | 1700 | | | | | | | | | | | |
| | | 1000 x 2100 | 2750 x 1950 | | | | | | | | | | | | | | | | | | | |
| | | 1100 x 2100 | | | | | | | | | | | | | | | | | | | | |
| | 1950 x 1400 | 1000 x 2100 | 2750 x 1950 | | | | | | | | | | | | | | | | | | | |
| | | 1100 x 2100 | | | | | | | | | | | | | | | | | | | | |
| | | 1100 x 2100 | | | | | | | | | | | | | | | | | | | | |
| 1350 | 18/20 | 1.0 | 2000 x 1450 | 1100 x 2100 | 2800 x 2000 | 4250 | 4300 | 4300 | 4600 | 1450 | 1450 | 1500 | 1600 | | | | | | | | | |
| | | | | 1200 x 2100 | 2850 x 2000 | | | | | | | | | | | | | | | | | |
| | | | | 1100 x 2100 | 2800 x 2050 | | | | | | | | | | | | | | | | | |
| | | | 2000 x 1550 | 1100 x 2100 | 2800 x 2050 | | | | | | | | | | | | | | | | | |
| | | | | 1200 x 2100 | 2850 x 2050 | | | | | | | | | | | | | | | | | |
| | | | | 1200 x 2100 | 2850 x 2050 | | | | | | | | | | | | | | | | | |
| | | | 1.6 | 2000 x 1450 | 1100 x 2100 | | | | | | | | | 2800 x 2000 | 4300 | 4450 | 4700 | 4600 | 1500 | 1550 | 2100 | 1600 |
| | | | | | 1200 x 2100 | | | | | | | | | 2850 x 2000 | | | | | | | | |
| | | | | | 1100 x 2100 | | | | | | | | | 2800 x 2050 | | | | | | | | |
| | | 2000 x 1550 | | 1100 x 2100 | 2800 x 2050 | | | | | | | | | | | | | | | | | |
| | | | | 1200 x 2100 | 2850 x 2050 | | | | | | | | | | | | | | | | | |
| | | | | 1200 x 2100 | 2850 x 2050 | | | | | | | | | | | | | | | | | |
| | | 1.75 | 2000 x 1450 | 1100 x 2100 | 2800 x 2000 | 4400 | 4550 | 4700 | 4700 | 1600 | 1600 | 2100 | 1700 | | | | | | | | | |
| | | | | 1200 x 2100 | 2850 x 2000 | | | | | | | | | | | | | | | | | |
| | | | | 1100 x 2100 | 2800 x 2050 | | | | | | | | | | | | | | | | | |
| | | | 2000 x 1550 | 1100 x 2100 | 2800 x 2050 | | | | | | | | | | | | | | | | | |
| | | | | 1200 x 2100 | 2850 x 2050 | | | | | | | | | | | | | | | | | |
| | | | | 1200 x 2100 | 2850 x 2050 | | | | | | | | | | | | | | | | | |

| Reaction Load (kN) | | | | | | | | Motor | Voltage | Circuit Breaker per elevator | Power Supply Capacity (kVA) | | | | Starting power per elevator | Heat Dissipation per elevator | |
|--------------------|-----|-----|-----|-----|-----|--------|-----|-------|---------------------------|------------------------------|-----------------------------|---------|---------|---------|-----------------------------|-------------------------------|----------|
| F6 | F8 | F9 | F10 | F14 | F15 | F16+17 | F18 | (kW) | (V) | (A) | 1 unit | 2 units | 3 units | 4 units | (kVA) | (kW) | (kcal/h) |
| 37 | 66 | 100 | 81 | 24 | 13 | 133 | 60 | 6.7 | 220-230 380-415 460 | 63 40 25 | 14 | 25 | 38 | 50 | 21 | 0.88 | 758 |
| 55 | 107 | 100 | 81 | 36 | 20 | 205 | 110 | 10.7 | 220-230 380-415 460 | 63 40 40 | 19 | 35 | 51 | 67 | 30 | 1.41 | 1211 |
| 61 | 107 | 100 | 81 | 39 | 22 | 205 | 113 | 11.7 | | | 20 | 36 | 54 | 71 | 32 | 1.54 | 1325 |
| 45 | 72 | 125 | 102 | 20 | 26 | 171 | 83 | 7.7 | 220-230 380-415 460 | 63 40 40 | 14 | 25 | 38 | 50 | 21 | 1.02 | 872 |
| 67 | 112 | 125 | 103 | 29 | 38 | 263 | 127 | 12.3 | 220-230 380-415 460 | 100 40 40 | 19 | 35 | 51 | 67 | 30 | 1.62 | 1392 |
| 74 | 112 | 125 | 103 | 32 | 42 | 267 | 128 | 13.4 | | | 20 | 36 | 54 | 71 | 32 | 1.77 | 1517 |
| 51 | 76 | 142 | 116 | 22 | 30 | 192 | 94 | 10 | 220-230 380-415 460 | 63 40 40 | 18 | 33 | 49 | 64 | 23 | 1.32 | 1132 |
| 76 | 117 | 142 | 116 | 32 | 45 | 294 | 143 | 14.4 | 220-230 380-415 460 | 100 63 40 | 22 | 40 | 59 | 77 | 33 | 1.9 | 1630 |
| 84 | 117 | 142 | 116 | 35 | 49 | 297 | 144 | 15.8 | | | 24 | 44 | 65 | 85 | 35 | 2.09 | 1789 |

Schindler 5400 AP MRL Planning Data

| Load | | Speed | Car (mm) | Door (mm) | Shaft (mm) | Overtravel (mm) | | | | Pit Depth (mm) | | | |
|------|-------|-------|-------------|-------------|-------------|-----------------|-----------|------|----------|----------------|-----------|------|----------|
| (kg) | Pers | (m/s) | (W x D) | (W x D) | (W x D) | EN81 | CP2: 2000 | CNS | Malaysia | EN81 | CP2: 2000 | CNS | Malaysia |
| 1450 | 19/21 | 1.0 | 1800 x 1800 | 1100 x 2100 | 2650 x 2250 | N/A | N/A | N/A | 4600 | N/A | N/A | N/A | 1600 |
| | | 1.6 | | | | | | | 4700 | | | | 1700 |
| | | 1.75 | | | | | | | | | | | |
| 1600 | 21/24 | 1.0 | 1600 x 2100 | 1100 x 2100 | 2550 x 2550 | 4250 | 4300 | 4300 | 4600 | 1450 | 1450 | 1500 | 1600 |
| | | | | 1200 x 2100 | 2650 x 2550 | | | | | | | | |
| | | | 2000 x 1700 | 1100 x 2100 | 2800 x 2150 | | | | | | | | |
| | | | | 1200 x 2100 | 2850 x 2150 | | | | | | | | |
| | | | 2100 x 1700 | 1100 x 2100 | 2900 x 2150 | | | | | | | | |
| | | | | 1200 x 2100 | | | | | | | | | |
| | | 1.6 | 1600 x 2100 | 1100 x 2100 | 2550 x 2550 | 4300 | 4450 | 4700 | 4600 | 1500 | 1550 | 2100 | 1600 |
| | | | | 1200 x 2100 | 2650 x 2550 | | | | | | | | |
| | | | 2000 x 1700 | 1100 x 2100 | 2800 x 2150 | | | | | | | | |
| | | | | 1200 x 2100 | 2850 x 2150 | | | | | | | | |
| | | | 2100 x 1700 | 1100 x 2100 | 2900 x 2150 | | | | | | | | |
| | | | | 1200 x 2100 | | | | | | | | | |
| | | 1.75 | 1600 x 2100 | 1100 x 2100 | 2550 x 2550 | 4400 | 4550 | 4700 | 4700 | 1600 | 1600 | 2100 | 1700 |
| | | | | 1200 x 2100 | 2650 x 2550 | | | | | | | | |
| | | | 2000 x 1700 | 1100 x 2100 | 2800 x 2150 | | | | | | | | |
| | | | | 1200 x 2100 | 2850 x 2150 | | | | | | | | |
| | | | 2100 x 1700 | 1100 x 2100 | 2900 x 2150 | | | | | | | | |
| | | | | 1200 x 2100 | | | | | | | | | |

Remarks

Dimensions

- Shaft dimensions width & depth are based on clear dimension with +/-25mm horizontal tolerances over the total travel height.
- Car dimensions with shaded **dark grey background** in compliance with EN81. For different car sizes, please contact our local sales offices.
- Car dimensions with shaded **light grey background** are deep cars with a side COP.
- Indicated dimensions are standard for counterweight without safety gear.
- Load (Pers) shown are based on 75kg/68kg per person.
- 450kg Load is not applicable to Hong Kong, Singapore and Malaysia; 550kg Load is also not applicable to Hong Kong. For a local solution, please contact our local sales offices.
- All given information is for general reference and planning. For specific construction detail, please contact our local sales offices.

Overtravel and Pit Depth

- EN81 for Hong Kong, CP2:2000 for Singapore and CNS for Taiwan.
- Overtravel requirement is based on 2500mm structural car height.
- For smaller overhead and pit depth as well as local codes in other countries, please contact our local sales offices.

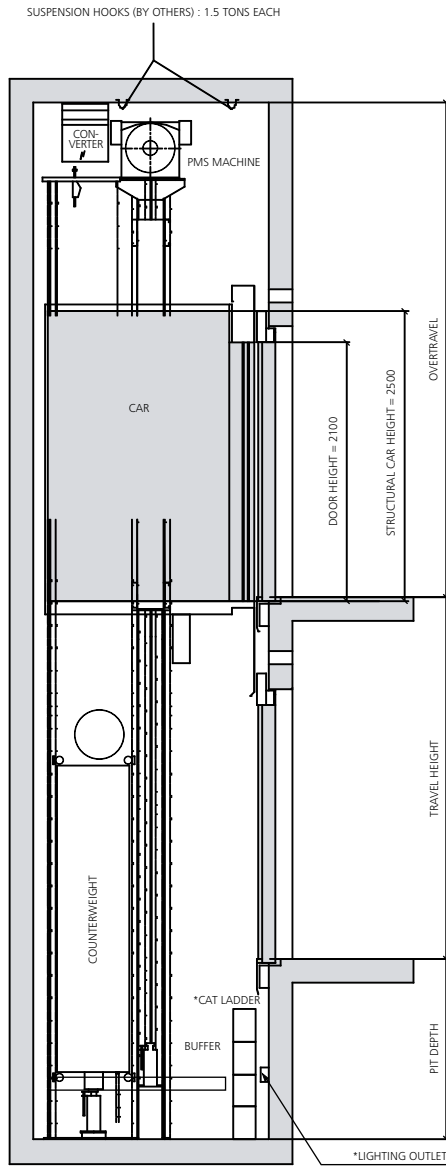
| Reaction Load (kN) | | | | | | | | Motor | Voltage | Circuit Breaker per elevator | Power Supply Capacity (kVA) | | | | Starting power per elevator | Heat Dissipation per elevator | |
|--------------------|-----|-----|-----|-----|-----|--------|-----|-------|---------|------------------------------|-----------------------------|---------|---------|---------|-----------------------------|-------------------------------|----------|
| F6 | F8 | F9 | F10 | F14 | F15 | F16+17 | F18 | (kW) | (V) | (A) | 1 unit | 2 units | 3 units | 4 units | (kVA) | (kW) | (kcal/h) |
| 54 | 78 | 149 | 120 | 23 | 31 | 196 | 96 | 9.7 | 415 | 40 | 17 | 31 | 46 | 60 | 24 | 1.28 | 1098 |
| 79 | 119 | 149 | 121 | 34 | 46 | 299 | 145 | 15.5 | | 63 | 24 | 44 | 65 | 85 | 35 | 2.05 | 1755 |
| 87 | 119 | 149 | 121 | 37 | 51 | 302 | 146 | 17 | | 63 | 25 | 46 | 68 | 89 | 38 | 2.24 | 1925 |
| 58 | 162 | 162 | 131 | 23 | 35 | 205 | 101 | 10.7 | 220-230 | 100 | 19 | 35 | 51 | 67 | 26 | 1.41 | 1211 |
| | | | | | | | | | 380-415 | 63 | | | | | | | |
| | | | | | | | | | 460 | 40 | | | | | | | |
| 86 | 162 | 162 | 131 | 34 | 52 | 308 | 151 | 17.1 | 220-230 | 100 | 26 | 47 | 70 | 92 | 39 | 2.26 | 1936 |
| | | | | | | | | | 380-415 | 63 | | | | | | | |
| | | | | | | | | | 460 | 63 | | | | | | | |
| 94 | 162 | 162 | 131 | 38 | 57 | 312 | 152 | 18.7 | | | 28 | 51 | 76 | 100 | 42 | 2.47 | 2117 |

Heat Dissipation

- Our equipment is designed to withstand a temperature range of 5 to 40°C.
- To achieve a suitable room temperature for service personnel, the shaft temperature should be kept within the range of 5 to 35°C.
- The humidity in the machine room should not exceed 90% in monthly average and 95% in daily average without condensation.

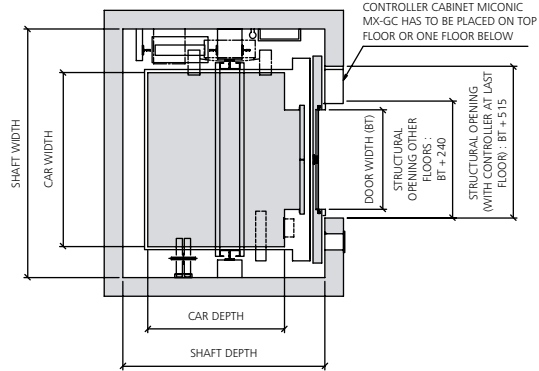
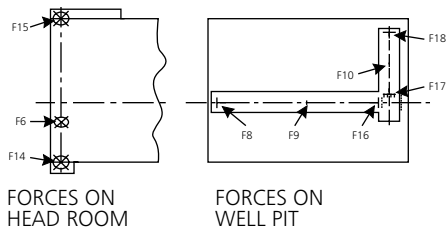


Schindler 5400 AP MRL Planning Data

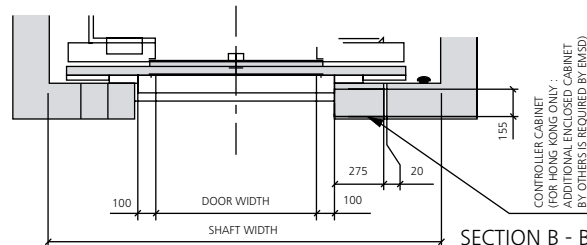
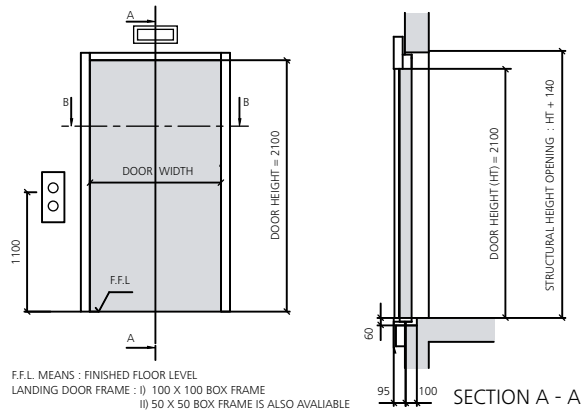


PENETRATION, GROUTING AND ITEMS MARKED * BY BUILDING CONTRACTORS

HOISTWAY SECTION



HOISTWAY PLAN



LANDING DOOR

- F6 MAX. FORCE AT CAR SUSPENSION
- F8 FORCE OF GUIDE RAIL CAR WALL SIDE
- F9 FORCE OF BUFFER ON HOISTWAY PIT, CAR SIDE
- F10 FORCE OF BUFFER ON HOISTWAY PIT, COUNTERWEIGHT SIDE
- F14 SUPPORT FORCE 1 OF TRAVERSE BEAM HEAD ROOM
- F15 SUPPORT FORCE 2 OF TRAVERSE BEAM HEAD ROOM
- F16 FORCE OF GUIDE RAIL CAR DRIVE SIDE
- F17 FORCE OF GUIDE RAIL COUNTERWEIGHT DRIVE SIDE
- F18 FORCE OF GUIDE RAIL COUNTERWEIGHT WALL SIDE

We are always close by.

Please contact one of the following addresses:

Brunei

Schindler Liftec Sdn. Bhd.
Unit B8, 1st Floor, Kompleks Setia Kenangan
Kg. Kiulap, Mukim Gadong
Bandar Seri Begawan BE 1518
Negara Brunei Darussalam
Telephone + 673 2 236 515
 + 673 2 236 516
Fax + 673 2 236 470
info@bn.schindler.com

Cambodia

Jardine Schindler (Cambodia) Ltd.
#183FEo, Mao Tse Toung Blvd, Sangkat Toul Svay Prey I
Khan Chamkamorn, Phnom Penh, Cambodia
Telephone + 855 23 223 075
Fax + 855 23 223 076
info@kh.schindler.com

Hong Kong

Schindler Lifts (Hong Kong) Ltd.
29th Floor, Devon House, Taikoo Place, 979 King's Road
Quarry Bay, Hong Kong
Telephone + 852 2516 8168
Fax + 852 2516 6026
info@hk.schindler.com

Indonesia

P.T. Berca Schindler Lifts
Menara Rajawali 5th Fl Podium
Jl. Mega Kuningan Lot 5.1
Kawasan Mega Kuningan, Jakarta 12950, Indonesia
Telephone + 62 21 576 1476
 + 62 21 576 1582
 + 62 21 576 3338
Fax + 62 21 576 1844
info@id.schindler.com

Macau

Jardine Schindler Lifts (Macao) Ltd.
No. 180 Alameda Dr. Carlos D Assumpcao
EFD. Tong Nam Ah Central Comercio, 10-andar-P, Macau
Telephone + 853 2883 7273
Fax + 853 2883 7264
info@hk.schindler.com

Malaysia

Antah Schindler Sdn Bhd (3837-H)
7th & 8th Floor, Bangunan TH Uptown 3
No. 3 Jalan SS 21/39, Damansara Uptown
47400 Petaling Jaya, Selangor D Ehsan, Malaysia
Telephone + 60 3 7725 1818
Fax + 60 3 7725 1181
info@my.schindler.com

Philippines

Jardine Schindler Elevator Corporation
2307 Pasong Tamo Extension, Makati City 1231, Philippines
Telephone + 63 2 843 1402
Fax + 63 2 843 1419
info@ph.schindler.com

Singapore

Schindler Lifts (Singapore) Pte. Ltd.
1 Kaki Bukit Place, Singapore 416179
Telephone + 65 6748 8611
Fax + 65 6846 2212
info@sg.schindler.com

Taiwan

Jardine Schindler Lifts Ltd.
9th Floor, 35 Kwang Fu South Road
Taipei 105, Taiwan, R.O.C.
Telephone + 886 2 2528 6626
Fax + 886 2 2528 6656
info@tw.schindler.com

Thailand

Jardine Schindler (Thai) Ltd.
20th Floor, Times Square Building
246 Sukhumvit Road, Klongtoey, Bangkok 10110, Thailand
Telephone + 66 2 685 1600
Fax + 66 2 685 1601
info@th.schindler.com

Vietnam

Schindler Vietnam Ltd.
9/F, Star Building, 33ter-33bis Mac Dinh Chi Street
District 1, Ho Chi Minh City, Vietnam
Telephone + 84 8 821 3383
 + 84 8 821 3384
Fax + 84 8 821 3382
info@vn.schindler.com

Or visit our website:

www.jardineschindler.com

Disclaimer

The specifications, options and colors expressed within this brochure are indicative only and are subject to change without notice. They are not intended to, and do not, constitute an offer on the part of the Jardine Schindler Group.